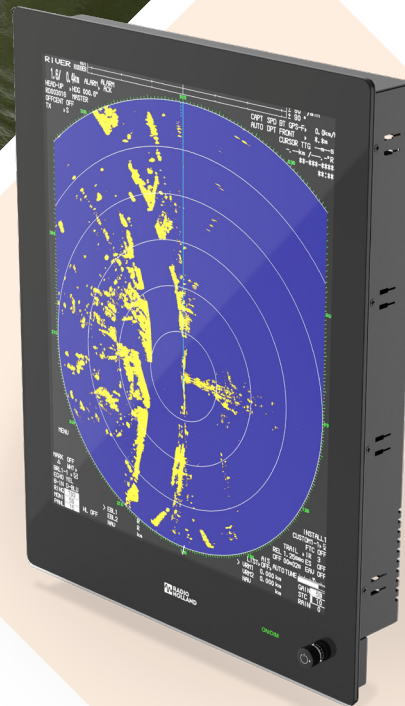




RHD-1900

Marine Display



The type approved RHD-1900 display is configured for seamless integration with Radio Holland RHRS2005 and RHRS20x4 radar systems. Designed with a focus on robustness, ease of installation, and stylish appearance, this display is a testament to our commitment to quality and user convenience.

KEY FEATURES:

- Minimum reflection thanks to Optical Bonding
- Sleek Full Glass design
- Compatible with Radio Holland Riverradar RHR2005, RHRS2014, and RHRS2024

Superior Clarity with Anti-Glare Glass

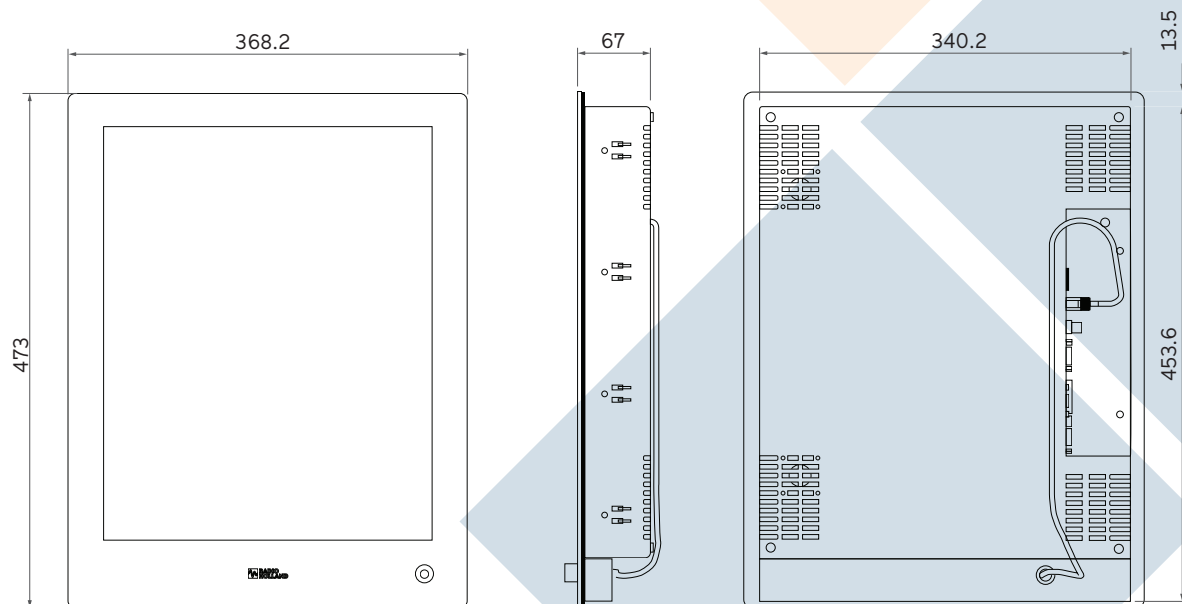
Equipped with Anti-Glare (AG) glass, the RHD-1900 reduces reflections significantly. AG glass features single-surface micro-etching, which dulls the surface slightly to virtually eliminate reflections. When paired with Optical Bonding, reflections on both the rear side of the glass and the LCD surface are dissolved, leading to a substantial reduction in glare.

Crystal Clear Display

Optical Bonding fills the gap between the LCD surface and the glass with a gel-like adhesive, eliminating the LCD-AIR-GLASS interface, thus preventing reflections and improving brightness and contrast. This also protects against dust and moisture, ensuring a clear and durable image. For the ultimate viewing experience, Optical Bonding combined with AG glass offers a crystal-clear display of unmatched quality.

Experience the best in marine display technology with the RHD-1900 – where high performance meets exquisite design.

Dimensions



Specifications

| Panel | |
|-----------------------|-----------------------|
| Display | 19.0 Inch |
| Active area HxV | 374,78 x 299.83 mm |
| Aspect ratio | 5:4 |
| Resolution | 1280x1024 Pixels |
| Viewing angle U/D/L/R | 89/89/89/89 deg |
| Contrast ratio | 1000 |
| Native brightness | 400 cd/m ² |

| Mechanical | |
|------------------------|-----------------|
| Unit WxHxD | 473x368.2x67 mm |
| Weight (incl. Options) | 7.2 kg |
| Mounting pattern | Option |

| Input sources | |
|---------------------------------|--|
| HDMI DVI-D VGA CVBS (BNC) | |

| Power input | |
|------------------------------|------------|
| 9-26VDC (Galvanic isolated) | (2p Screw) |
| Max. power native brightness | 30 Watt |

| Approvals | |
|-----------|----------|
| RHRS2005 | R-4-008 |
| RHRS2014 | e-01-021 |
| RHRS2024 | e-01-025 |

Radio Holland Netherlands
P.O. Box 5068, 3008 AB Rotterdam
Sluisjesdijk 87, 3087 AD Rotterdam

T +31 10 428 33 71
E service@radioholland.com
www.radioholland.com



FIRST CHOICE FOR NAVCOM SOLUTIONS